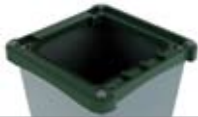


ballot boxes

ASSEMBLY INSTRUCTIONS FOR THE FORTRESS RANGE

STAGE 1
Attach the rim
to the base



STAGE 2
The four rotating
catches are on
the underside
of the rim



Rotate each catch
through 90° to
engage the rim
to the base



STAGE 3
When the catches are
fully engaged, rotate
the tail end of each
catch through 90°
to lock in position



STAGE 4
Fit the lid to the
rim, secure with
seals and your
ballot box is
ready for use



THE FORTRESS RANGE

The Fortress range is defined by a unique, fully secure lid, which can be locked into position on any of the boxes in the range, offering you maximum security and flexibility of choice.

With tamper-evident seals and a high security disc padlock as optional extras, the wide choice within the Fortress range means that your order can be specified according to your authority's exact needs.

Tested to international performance standards, this range of innovative, sturdy, stress-resistant election boxes has security and practicality at its very core.

A written audit trail can be incorporated into the design so that the numbers printed or embossed on the applied seals can be recorded for inspection prior to the seals being broken. As this audit trail will record the date and time of sealing, you can therefore identify the name and signature of the person or persons who have applied the seals. You can also record the date and time when the seals are broken and the name and signature of the authorised person who breaks the seals. It is also possible to identify (by names and signatures) the people who apply and break the seals including any authorised witnesses and the exact dates and times of when they did so.

SECURITY



Tamper evident seals
and padlock in position.

At close of poll a tamper
evident seal can also be
affixed to the shutter hasp.



FORTRESS ORION

The sturdy design of the Orion ballot box makes it the perfect choice for the larger order. Thirty six ballot boxes and lids can be stacked onto one pallet, for ease of storage and delivery. The clever design of the system also allows for votes to be stacked perfectly inside the box, ready for hand or machine counting at a later date.

The high security lid assembly associated with the Fortress range, means that for the duration of the election process and during transit to counting centres, it helps to guarantee the confidence of all participants. There are three frontal locking positions using one discus high security padlock and two sleeved tamper-evident seals. Protective shutter locks over the postal slot at close of poll by tamper-evident seals.



CAPACITY

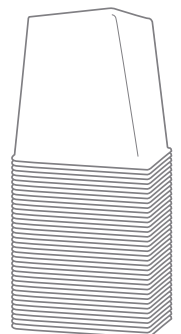
The internal container is 450mm [17.5"] wide x 450mm [17.5"] deep by 430mm [17"] high. 50 Litre internal capacity.

Storage:

The lid system separates from the storage bin by rotating four internal catches. The storage bins nest six in a stack and the lid system nests neatly on top.

Origin:

All of the components in this product are produced in the United Kingdom to UK Engineering Best Practice standards. These products are designed to provide many years of reliable service.



ballot boxes



FORTRESS 100 SERIES

With secure corner posts and strengthened plastic panels, the Fortress 100 Series is one of our most flexible ballot boxes in terms of capacity. You can dictate your own size, and authority seals or crests can easily be printed onto one of the panels. As with all other Pakflatt products, this design has been tested to international standards and is strong enough to withstand severe stress and impact.

As with all of the items in the Fortress range, the design of the removable lid and shutter is such that no paper or document can be stuffed into the ballot box after it has been closed and sealed. The three 'lid hasps' and one 'shutter hasp' ensure maximum security. This means that both independent and partisan observers at the polling station may affix their own seal where it is permitted by the electoral law and has been authorised by the appropriate authorities of that country. This will add to the security of ballot boxes in transit to counting centres and help to guarantee the confidence of all participants.



The Fortress 100 series can be supplied branded with your logo.

DIMENSIONS

Variable Capacity Ballot Box: dictate your own size. The capacity of the Fortress is dictated by the height of its corner posts. Its capacity increases by 1 Litre for every 6.84mm of height.

Corner Post (height mm)	Capacity (in litres)
800	117
700	102
600	88
500	73
400	66
300	44



The lid and base design means that the Fortress 100 series can be easily stacked.

UK Patent Application No. 0614929.8 / US Patent Application Serial No. 11/845,464



FORTRESS DUO

This highly innovative Ballot Box range combines all of the benefits of a high security ballot box with an equally secure lower storage compartment.

This storage compartment may be used to transport essential materials such as ballot papers, forms and envelopes, to the polling station. The seals that have been attached to the ballot box at your office do not need to be broken until the ballot box arrives back at the Election count.

The size of the Fortress Duo, including the relative sizes of the ballot box and the storage compartment, can be specified to order depending on your authority's particular needs. It will fit in the boot of most family cars. The internal container in this picture is nominally 345mm [13.5"] wide x 360mm [14"] deep by 165mm [6.5"] high. Complete with four brake castors of the type used in our highly successful booth range, the Fortress Duo is extremely convenient to manoeuvre and reduces lifting/manual handling to a minimum.

The Fortress Duo can be used with a range of tamper-evident seals and ring padlocks are an optional extra. A useful optional extra on all Fortress ballot box products, is the inclusion of low cost Radio Frequency Identity (RFID) tags for full traceability and added security.

DIMENSIONS

The internal container is 345mm [13.5"] wide x 360mm [14"] deep by 165mm [6.5"] high.

With the use of castors, it is easily transported.

